



Project

Seize the Day

This document contains basic information about project "Seize the Day" like: executive summary, concept of our system, the analysis of requirements, functional requirements, non-functional requirements.

Justyna Kubisztal
Adam Krupski
Michał Szczygieł

TABLE OF CONTENTS

INTRODUCTION.....	2
USE CASE.....	6
Diagram.....	7
GUI	8
Editing removing component	9
Setting alarm clock time	10
Time setting	11
TODO list editing	12
SYSTEM' INFORMATION FLOW MODEL	13
DIAGRAM CLASS CONCEPT	14
TIME TABLE.....	15
Time table for Windows Phone.....	15
Time table for Android.....	17
DIFFERENCES BETWEEN PROJECTS	19
EXTRAS.....	29

INTRODUCTION

9.12.2012

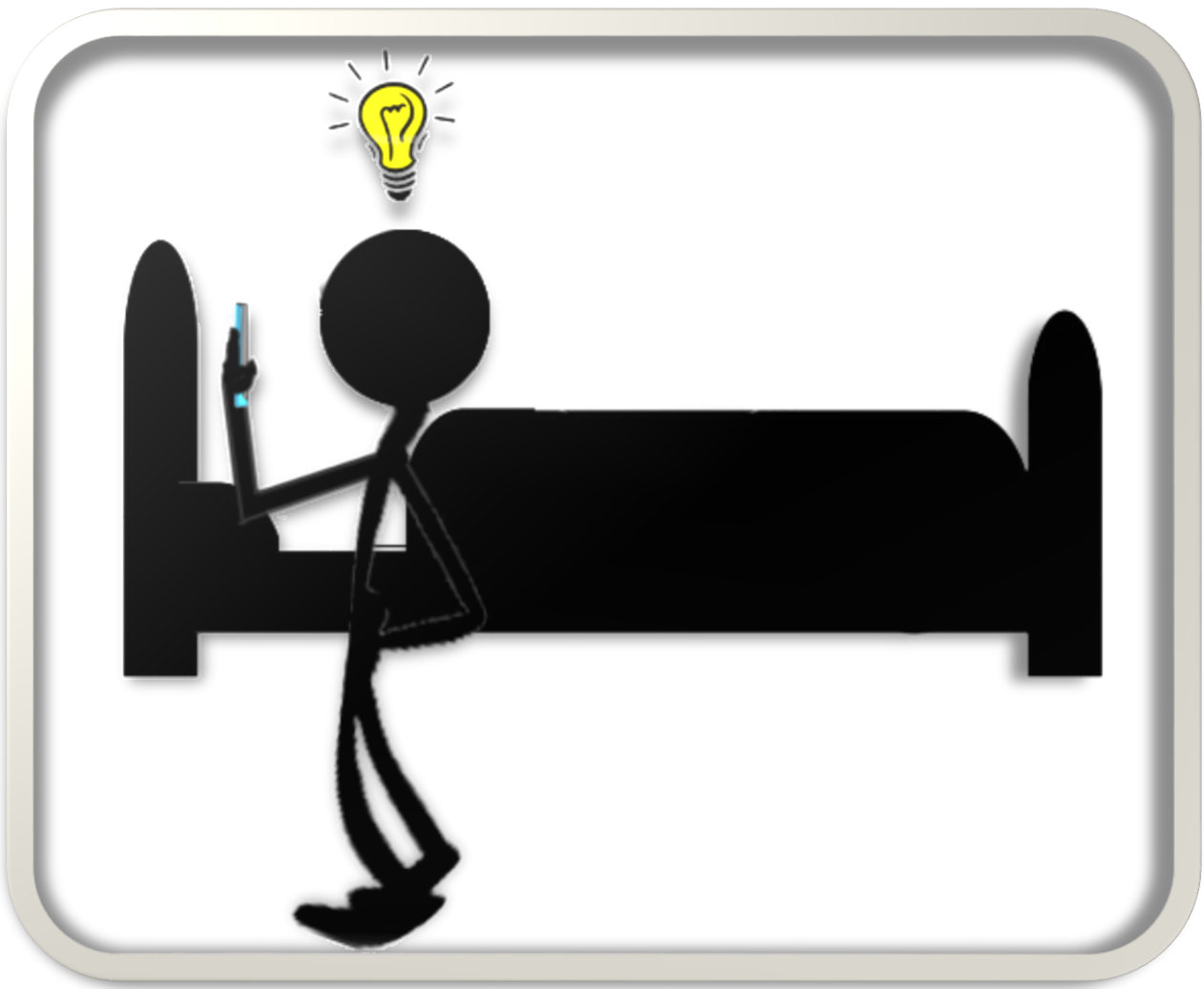
EVERY DAY DURING OUR SLEEP,
WE DON'T THINK ABOUT WHAT WILL
BRING TOMORROW



AND WHEN YOU WAKE UP, YOU DON'T
HAVE ANY IDEA WHAT YOU SHOULD DO



BUT EVERY DAY YOU USE YOUR PHONE
LIKE ALARM CLOCK.
HOW TO IMPROVE LIFE???



EVERYTHING IN YOUR PHONE SCREEN:
WEATHER, TASKS TO DO, HOW TO DRESS,
WHAT'S NEW IN WORLD



USE CASE

1. Main Form

1.1. Adding new component

1.1.1. After pressing (+) button user have possibility(can) to set new component:

1.1.1.1. Time component:

1.1.1.1.1. User can add new alarm time.

1.1.1.1.1.1. User can change alarm time.

1.1.1.1.2. User can remove added alarm time.

1.1.1.1.3. User can set sounds for alarm.

1.1.1.2. Task component:

1.1.1.2.1. User can add new task.

1.1.1.2.2. User can change task time.

1.1.1.2.2.1. User can change task.

1.1.1.3. Weather component:

1.1.1.3.1. User can see weather.

1.1.1.3.2. User can see how to dress.

1.1.1.3.3. User can change settings.

1.1.1.3.3.1. Set automatically own location.

1.1.1.3.3.2. Set manually location using geographic position.

1.1.1.3.3.2.1. Using GPS cords.

1.1.1.3.3.2.2. Using normal address.

1.1.1.4. News component:

1.1.1.4.1. User can see news.

1.1.1.4.2. User can change settings.

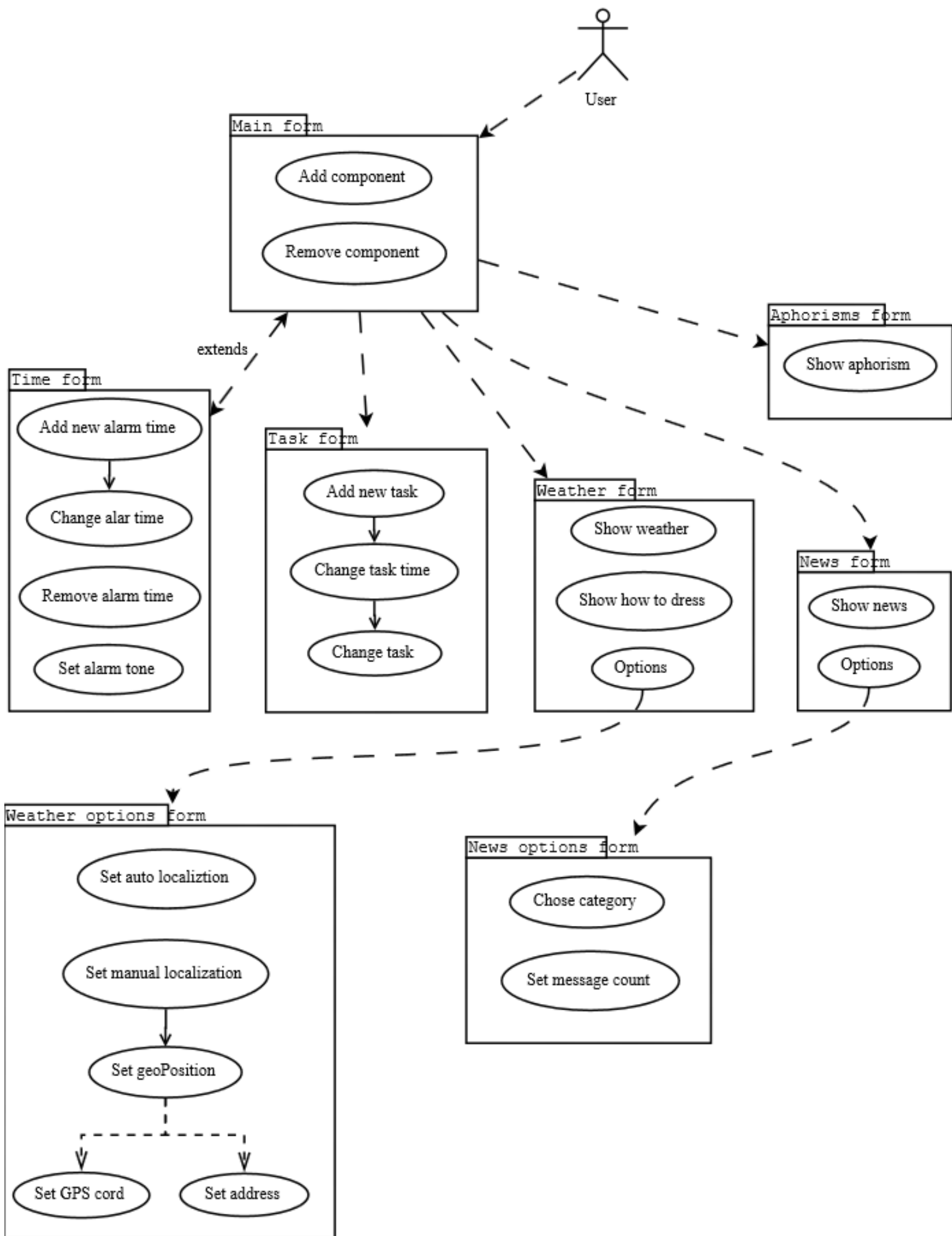
1.1.1.4.2.1. User can change category.

1.1.1.4.2.2. User can set amount of showing news.

1.1.1.5. Aphorisms component:

1.1.1.5.1. User can see aphorism.

1.2. Remove existing component



GUI



Alarm

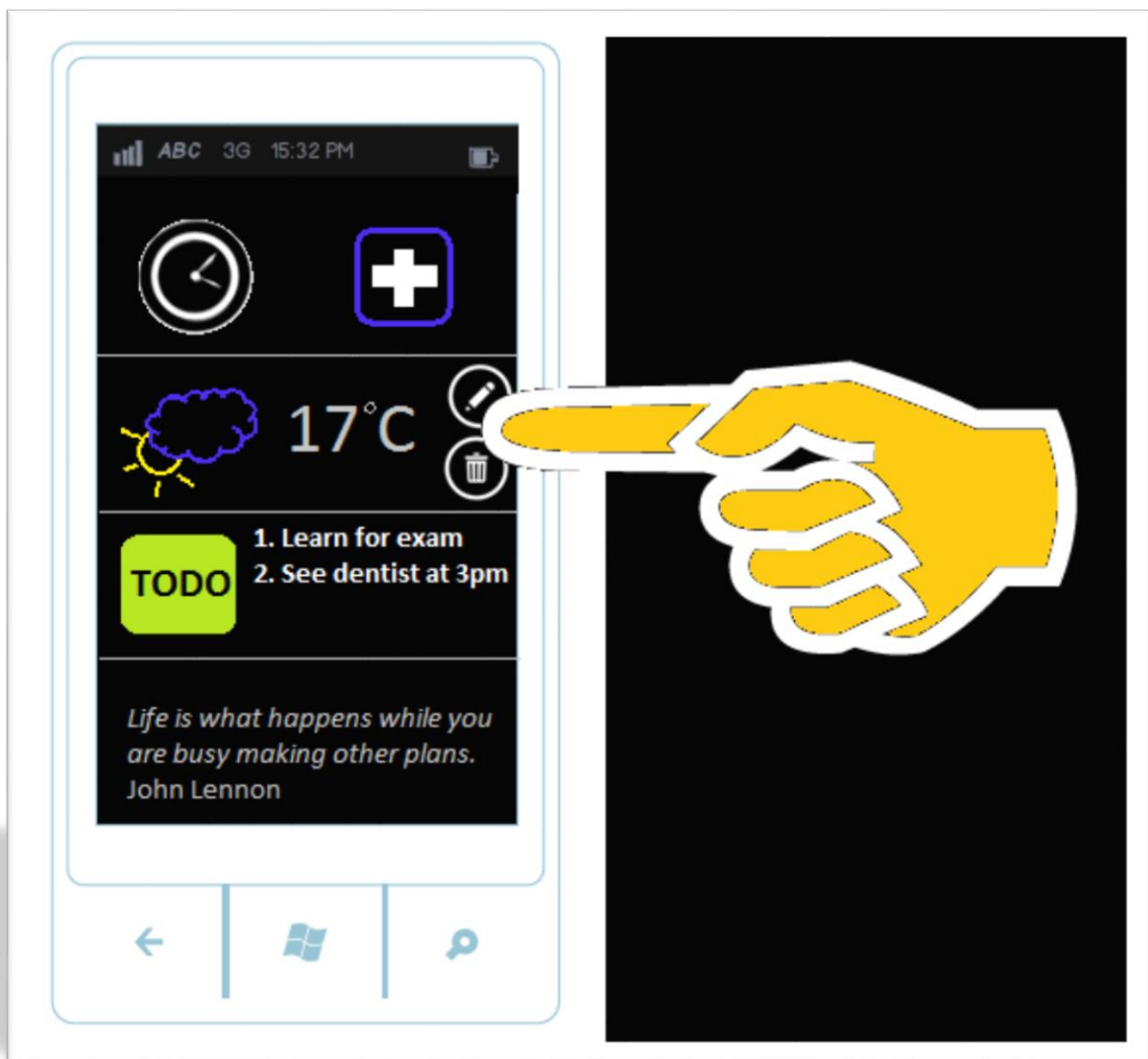
Weather

News

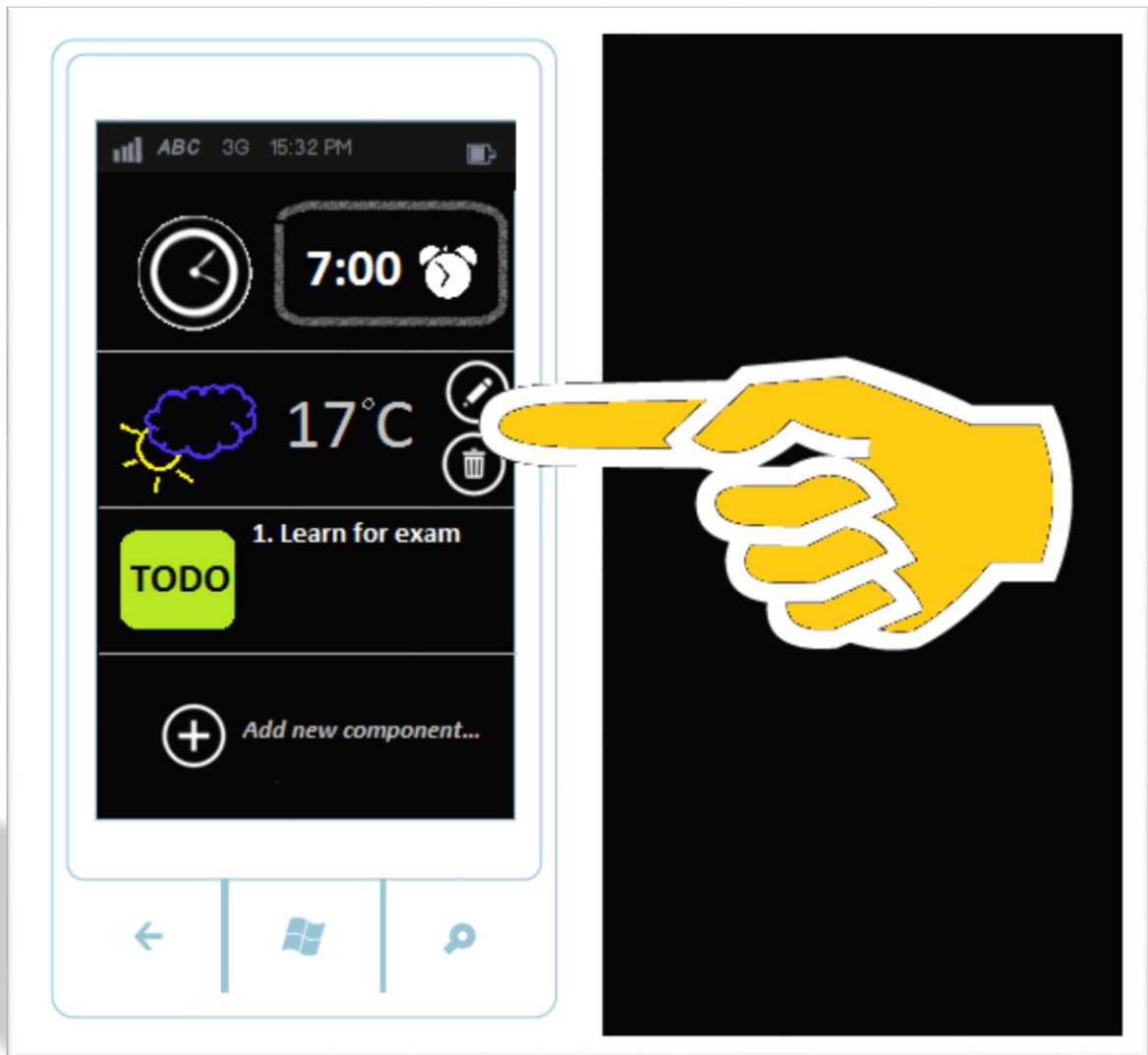
Editing removing component

When user clicks on component, two small icons are shown: one for removing and one for editing component.

When user chooses icon with trash, the component is removed. If icon with pencil is chosen, new screen is shown with settings of component. Each component has different screen for settings.



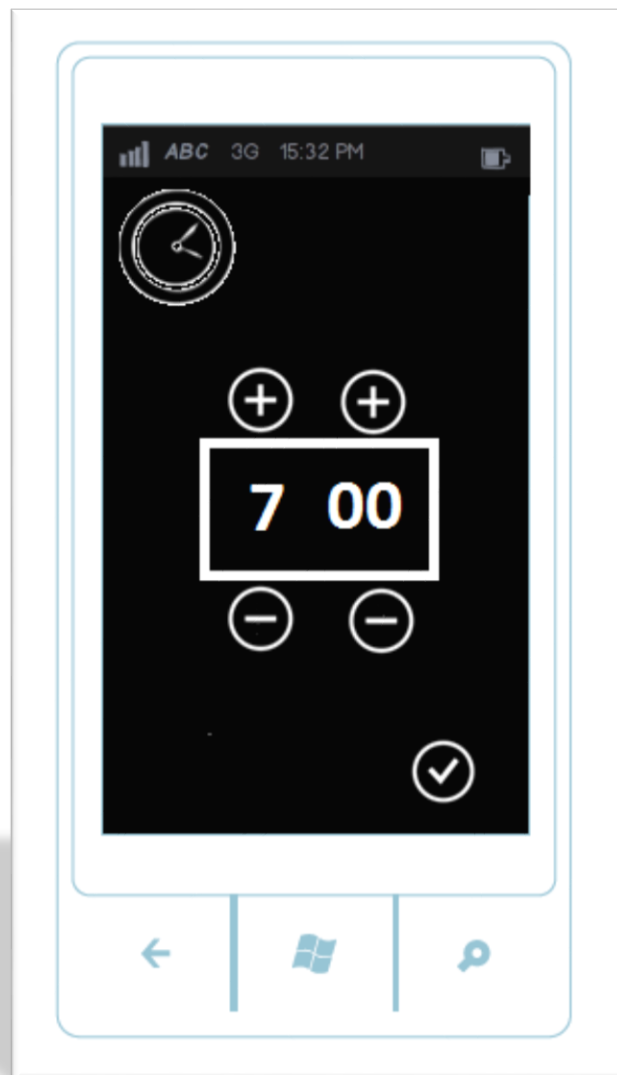
Setting alarm clock time



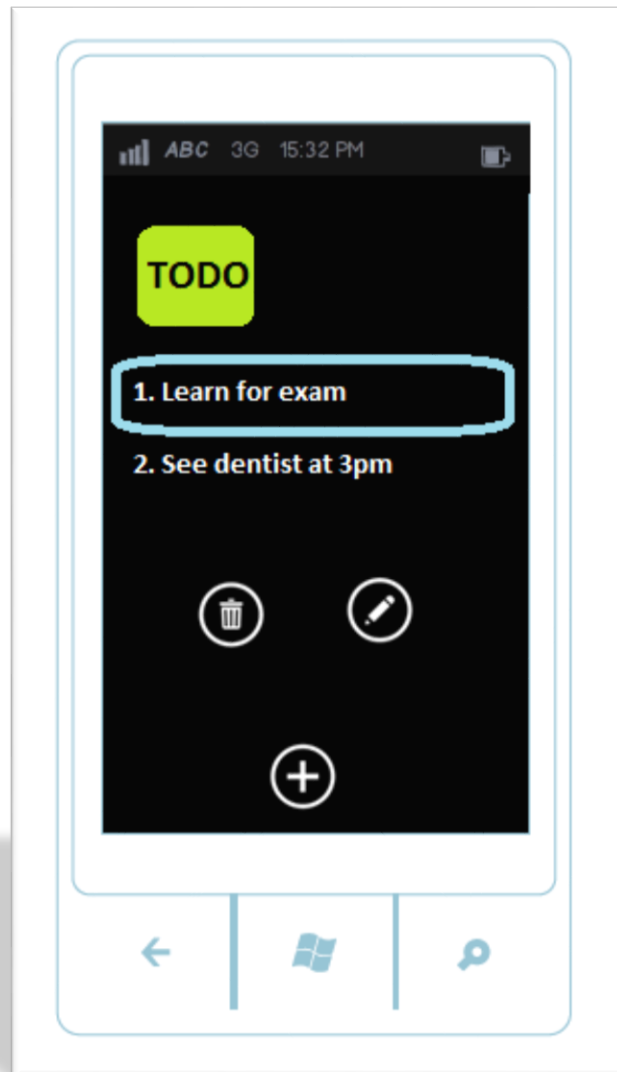
On the bottom of list with component there is an icon for adding new component. If pressed, user will be asked which component he want to add.

Time setting

When user press clock or add button, screen with alarm clock is shown. Time can be set here.



TODO list editing



When editing TODO list, screen as above is shown.

When precise task is selected icons/buttons with option of editing and deleting are shown.

SYSTEM' INFORMATION FLOW MODEL

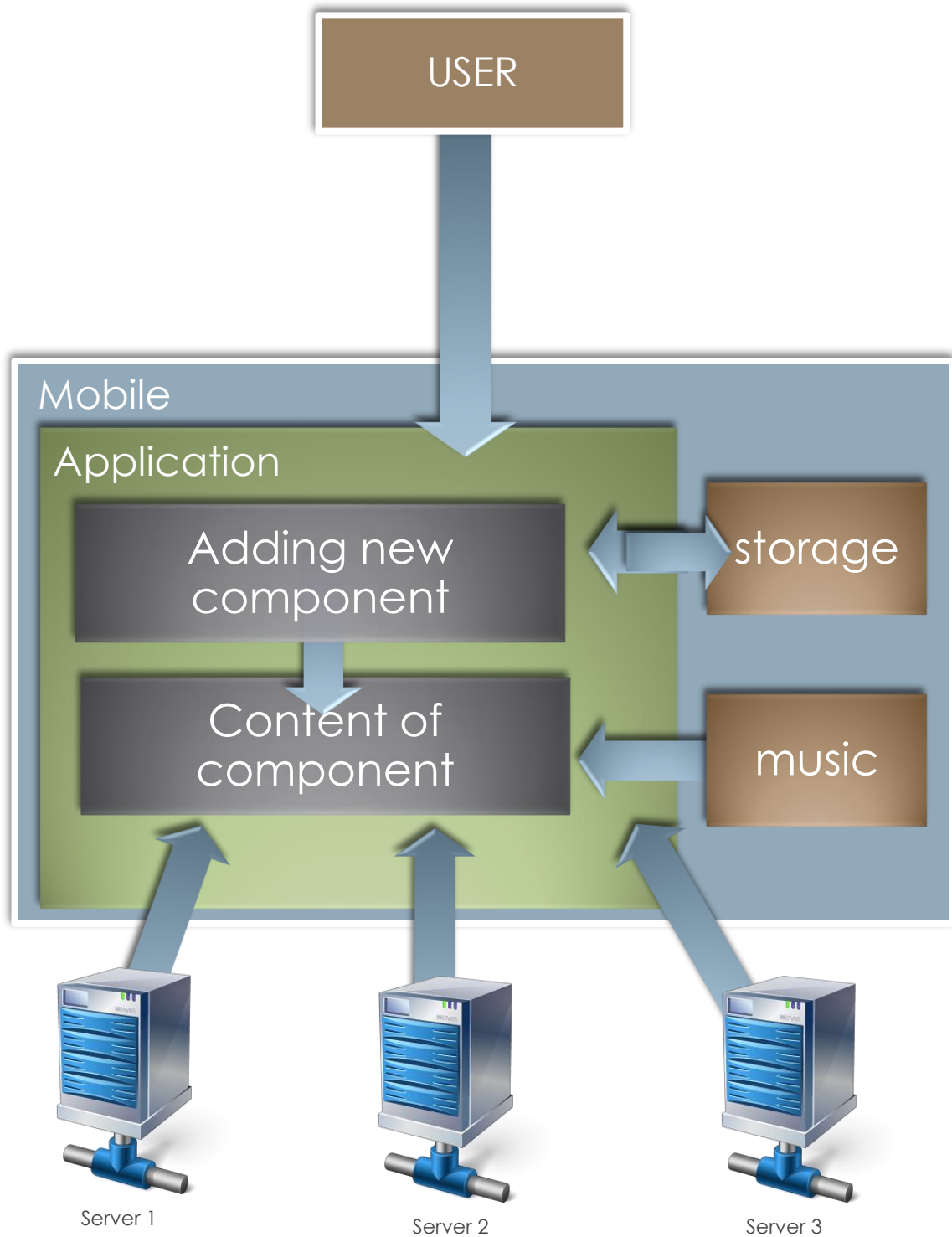
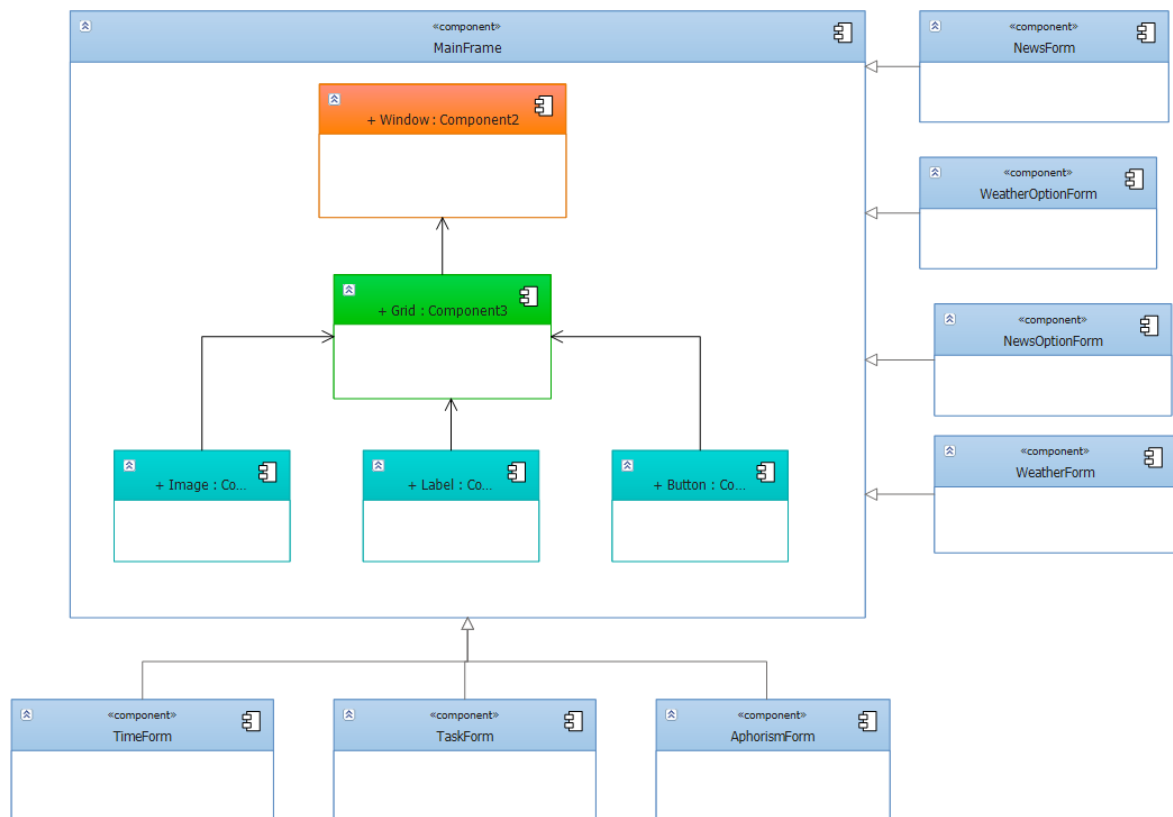


DIAGRAM CLASS



View



TIME TABLE

WINDOWS PHONE

Task/Week	44	45	46	47	48	49
Prepare working						
Creating repository on Git Server	Krupski					
Planning session	Kubisztal/Krupski/Szczygiel					
Creating documentation	Kubisztal/Krupski/Szczygiel					
Creating diagram class						Kubisztal
Create Core						
Presenting available base component	Kubisztal/Szczygiel					
Adding/removing components	Szczygiel					
Creating basic graphic for component	Szczygiel					
Behaviour of state in background	Kubisztal/Szczygiel					
TimeForm Features						
Adding new time			Szczygiel/Kubisztal			
Removing time			Szczygiel			
Changing existing time			Kubisztal			
Setting alarm tone from phone library			Szczygiel			
Creating graphic for TimeForm			Szczygiel			
TaskForm Features						
Adding new task						Szczygiel
Changing task time						Not implemented
Auto removing after done						Not implemented
Changing task						Szczygiel
Removing task						Szczygiel
Creating graphic for TaskForm						Szczygiel
NewsForm Features						
Presenting news in Grid					Szczygiel	
Getting and presenting date from API					Szczygiel	
Creating graphic for NewsForm					Szczygiel	
NewsOptionForm						
Adding Options list					Szczygiel	
Creating graphic for NewsOptionForm					Szczygiel	

WeatherForm Features						
Presenting data weather in Grid					Kubisztal	
Getting and presenting date from API					Kubisztal	
WeatherOptionForm						
Using geographic localization from GPS to auto localization						Not implemented
Creating panel to manually put localization data with City or GPS cord					Kubisztal	
Creating graphic for WeatherOptionForm					Kubisztal	
AphorismForm Features						
Creating graphic for AphorismForm						Szczygiel
Presenting aphorism in grid						Szczygiel
Getting and presenting date from API						Szczygiel
Another						
Finding available API servers						Szczygiel/Kubisztal
Testing						
						Szczygiel/Kubisztal
Bug Fixing						
						Szczygiel

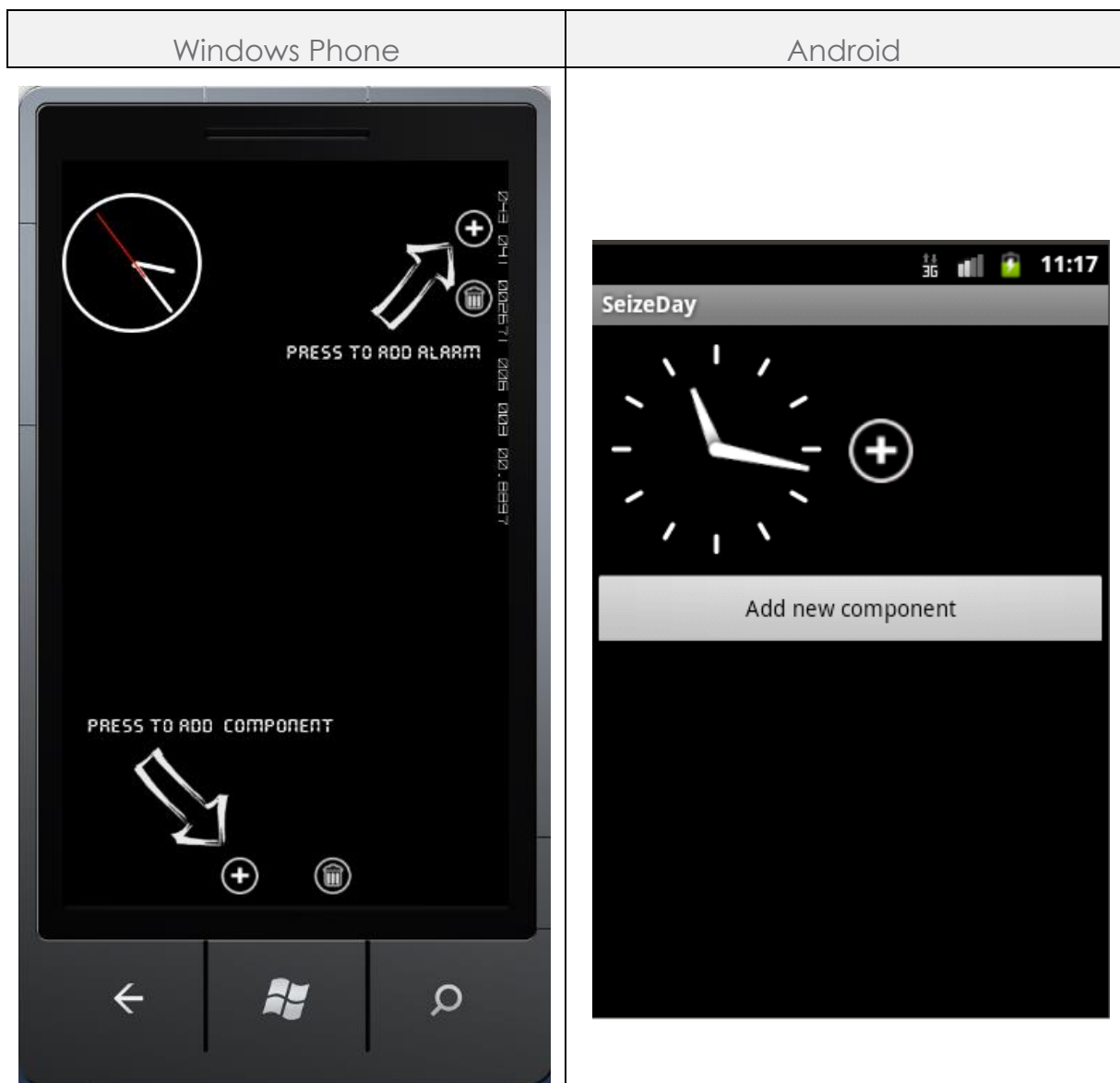
TIME TABLE

ANDROID

Task/Week	44	45	46	47	48	49
Prepare working						
Creating repository on Git Server	Krupski					
Planning session	Kubisztal/Krupski/Szczygieł					
Creating documentation	Kubisztal/Krupski/Szczygieł					
Creating diagram class						Krupski
Create Core						
Presenting available base component	Krupski					
Adding/removing components	Krupski					
Creating basic graphic for component	Szczygieł					
Behaviour of state in background	Krupski					
TimeForm Features						
Adding new time						Krupski
Removing time						Krupski
Changing existing time						Krupski
Setting alarm tone from phone library						Not implemented
Creating graphic for TimeForm					Szczygieł	
TaskForm Features						
Adding new task						Krupski
Changing task time						Not implemented
Auto removing after done						Not implemented
Changing task						Not implemented
Removing task						Krupski
Creating graphic for TaskForm						Krupski
NewsForm Features						
Presenting news in Grid						Szczygieł
Getting and presenting date from API						Szczygieł
Creating graphic for NewsForm						Szczygieł

NewsOptionForm						
Adding Options list						Szczygieł
Creating graphic for NewsOptionForm						Szczygieł
WeatherForm Features						
Presenting data weather in Grid						Not implemented
Getting and presenting date from API						Not implemented
WeatherOptionForm						
Using geographic localization from GPS to auto localization						Not implemented
Creating panel to manually put localization data with City or GPS cord						Not implemented
Creating graphic for WeatherOptionForm						Not implemented
AphorismForm Features						
Creating graphic for AphorismForm						Szczygieł
Presenting aphorism in grid						Szczygieł
Getting and presenting date from API						Szczygieł
Another						
Finding available API servers						Szczygieł
Testing						
						Szczygieł/Krupski
Bug Fixing						
						Szczygieł/Krupski

DIFFERENCES BETWEEN PROJECTS

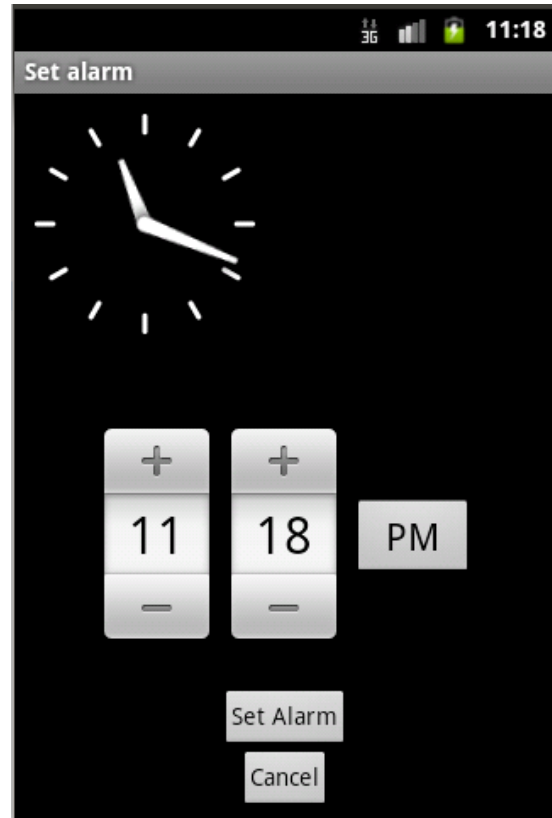


First screen of application.
Page is blank. You can
add alarm and
components.

Windows Phone



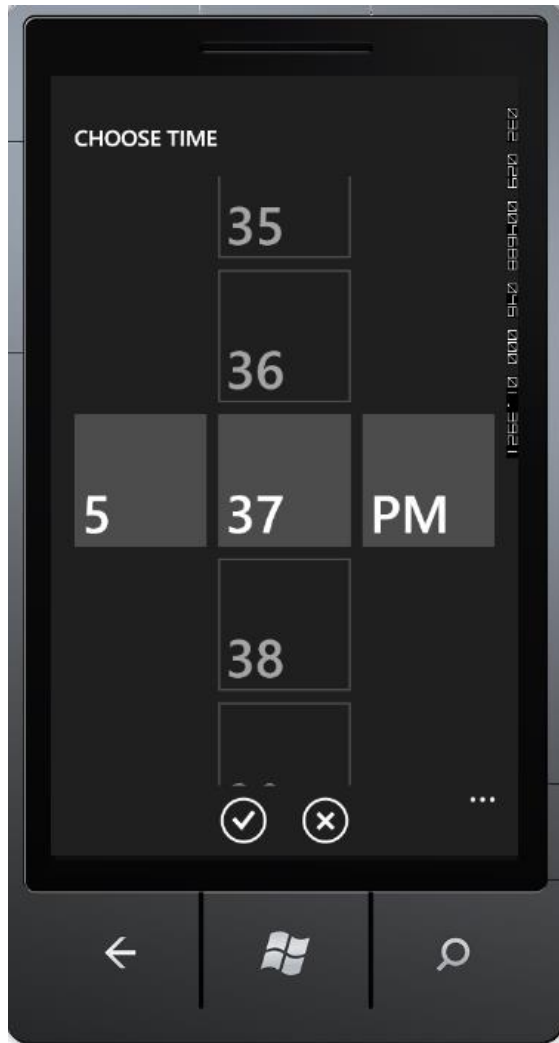
Android



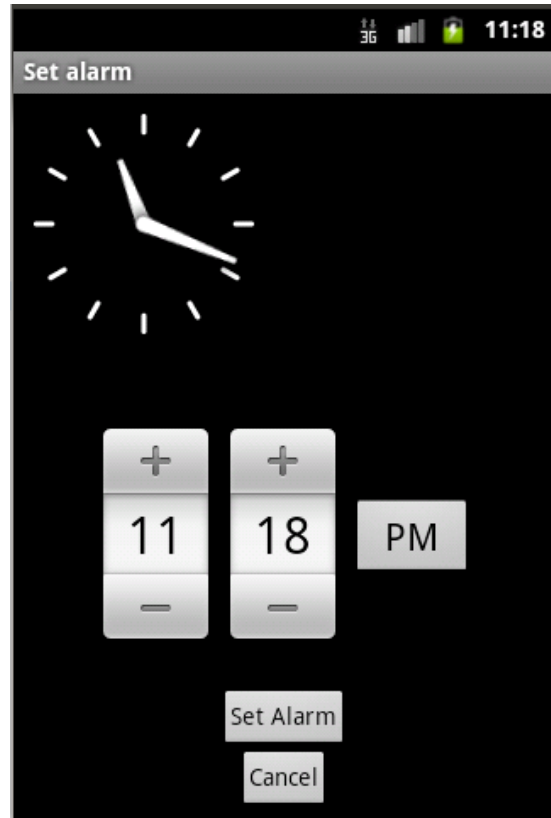
Page with settings for alarm clock. You can set time for alarm here and choose sound of alarm.

Page with settings for alarm clock. You can set time for alarm here but you can't choose sound of alarm, like in windows phone version.

Windows Phone



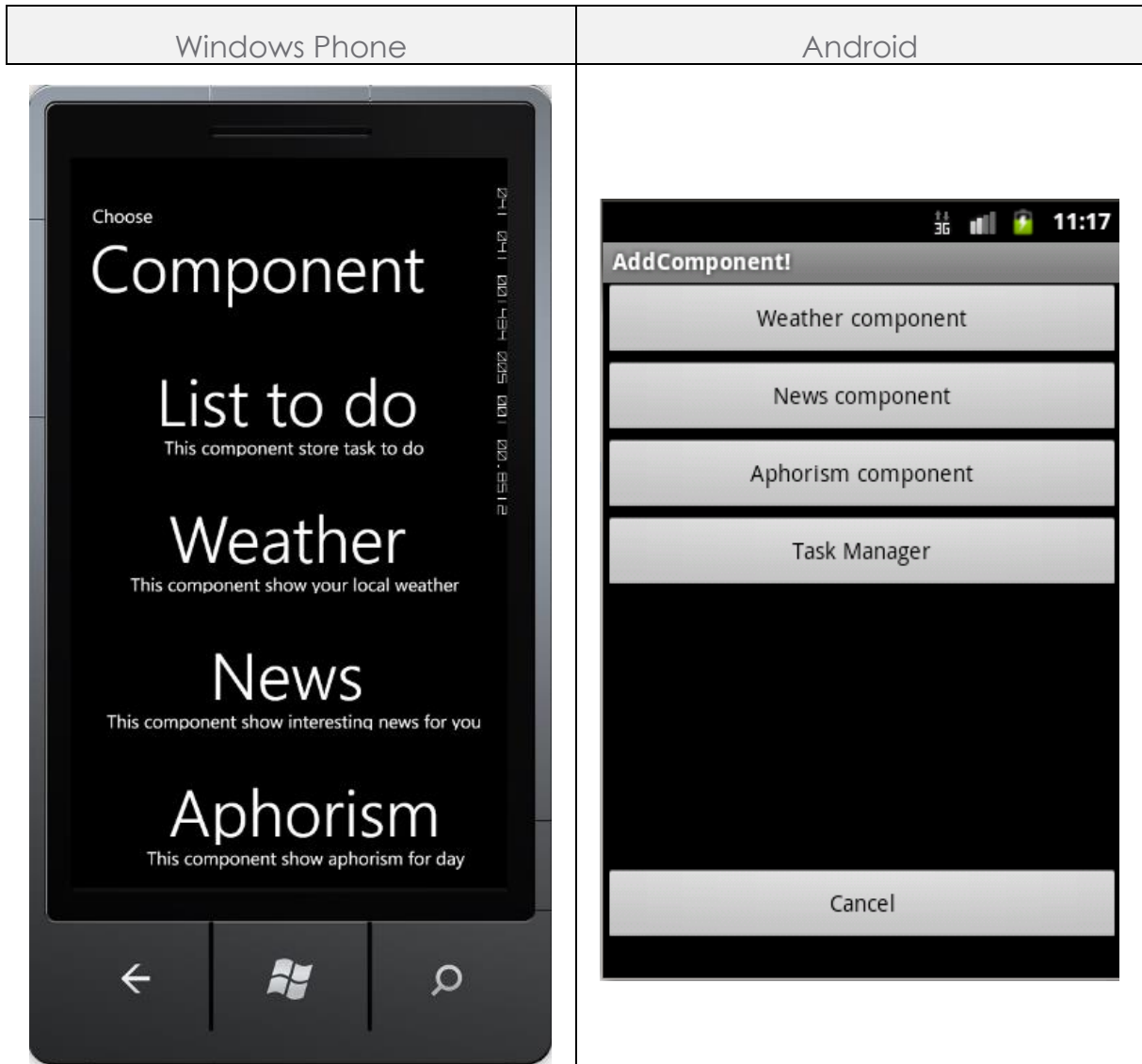
Android



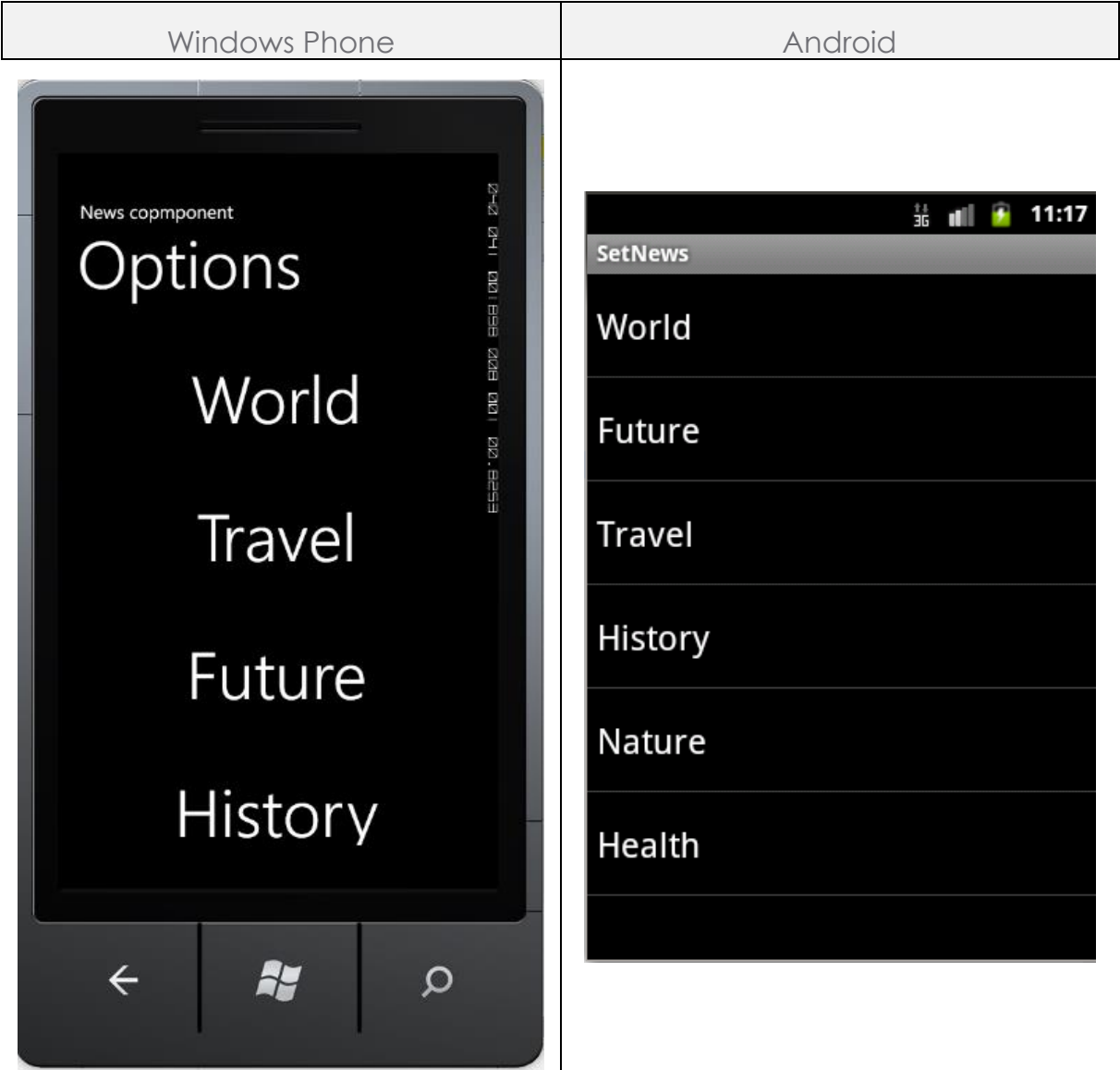
Screen of setting exact time of alarm.



In android version screen of choose exact time is on one page.



Screen which is shown when you want to add component. Possible components are: Weather, Aphorism, News and List of task to do. Each component apart from Aphorism has its own page with settings.



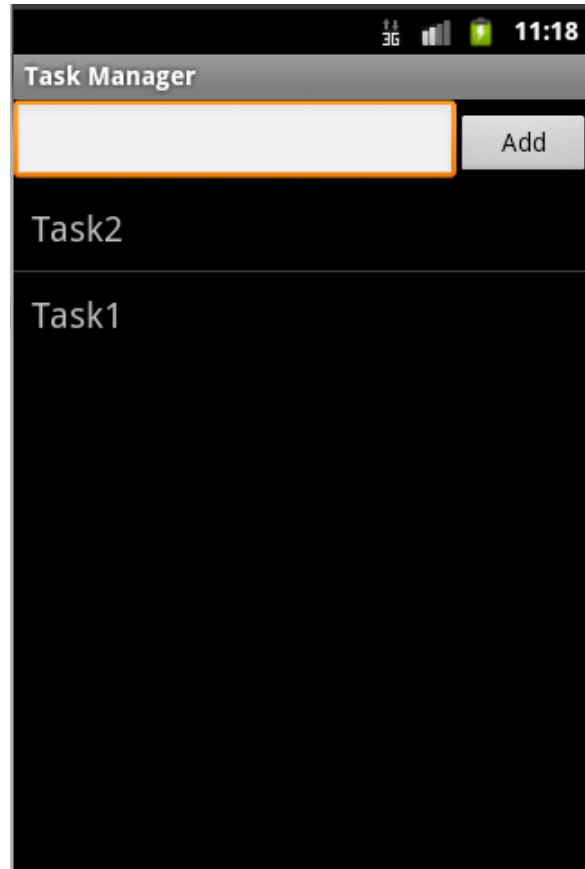
Options for News component.

Windows Phone



Settings for List of task component. You can add some tasks to do and use checkboxes to set them as done.

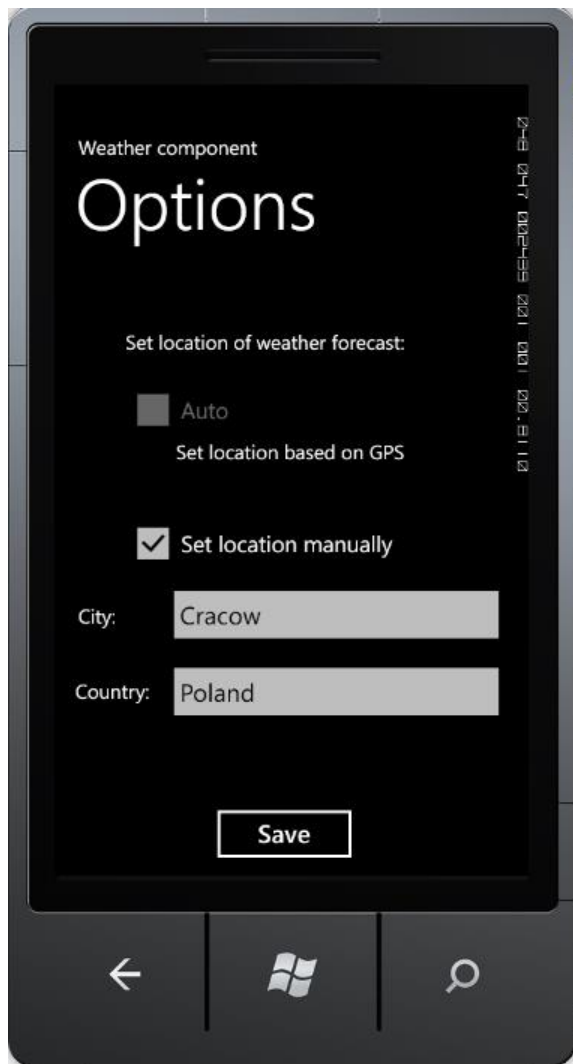
Android



Settings for List of task component. You can add some tasks to do. After pressing on task item, user is moves to page, where can delete current task.

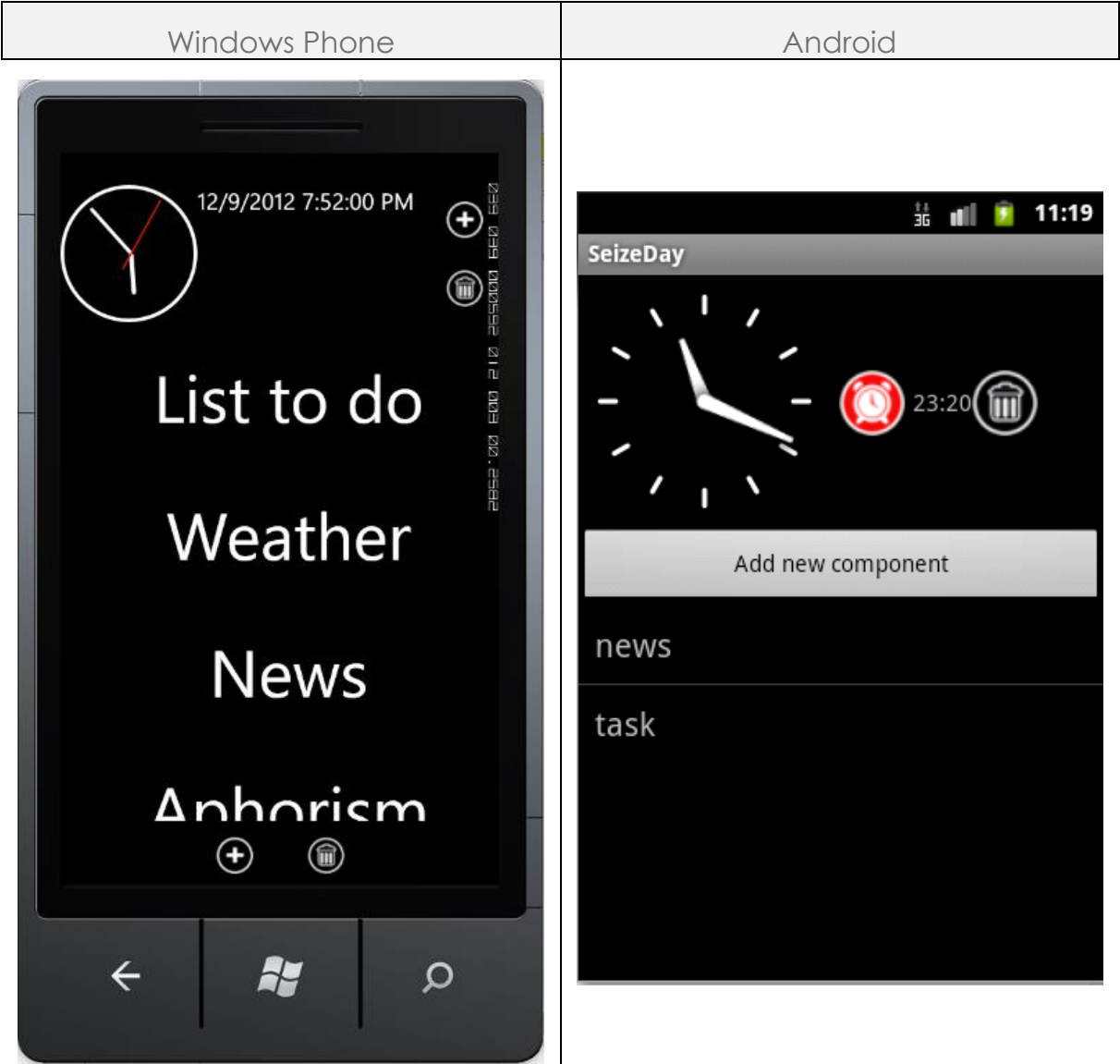
Windows Phone

Android



Options for weather component. As far we managed to implement manual setting of localization.

Not yet implemented



Screen displaying alarm set and added components. With double-click you can edit component..

Windows Phone



Android



Final screen which is displayed when alarm rings. Components are displayed in a list.

DIAGRAM CLASS WINDOWS PHONE

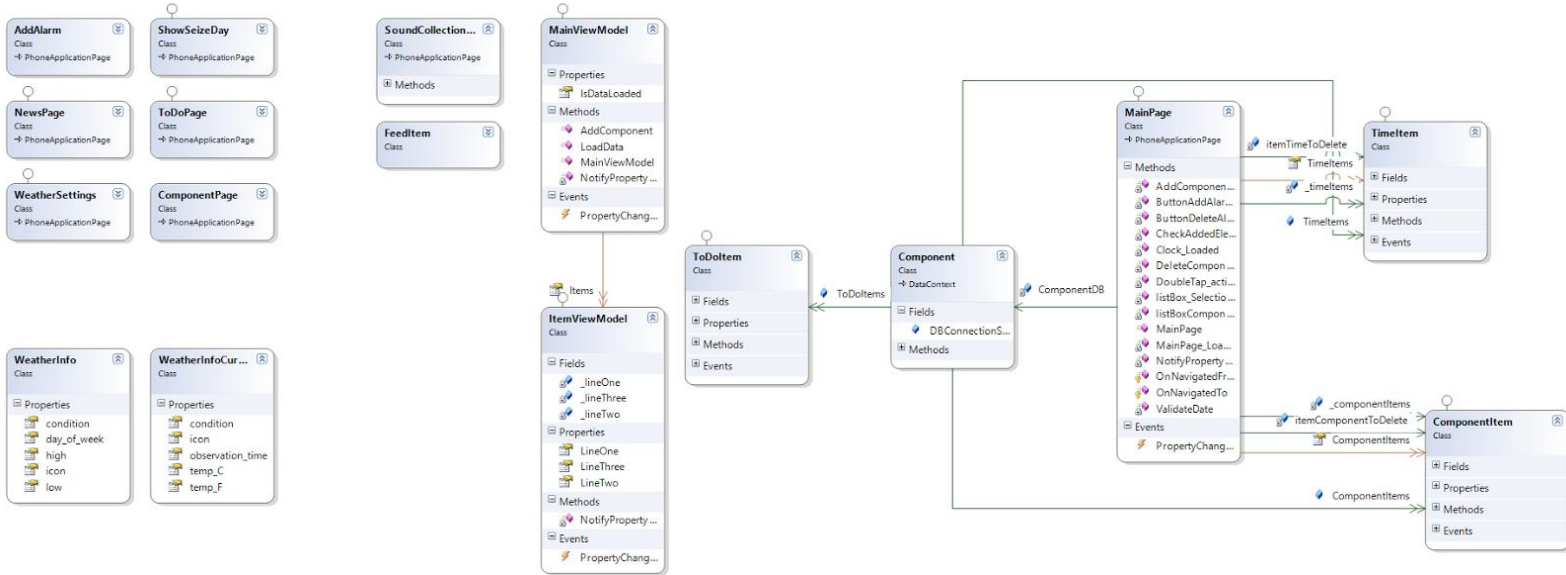
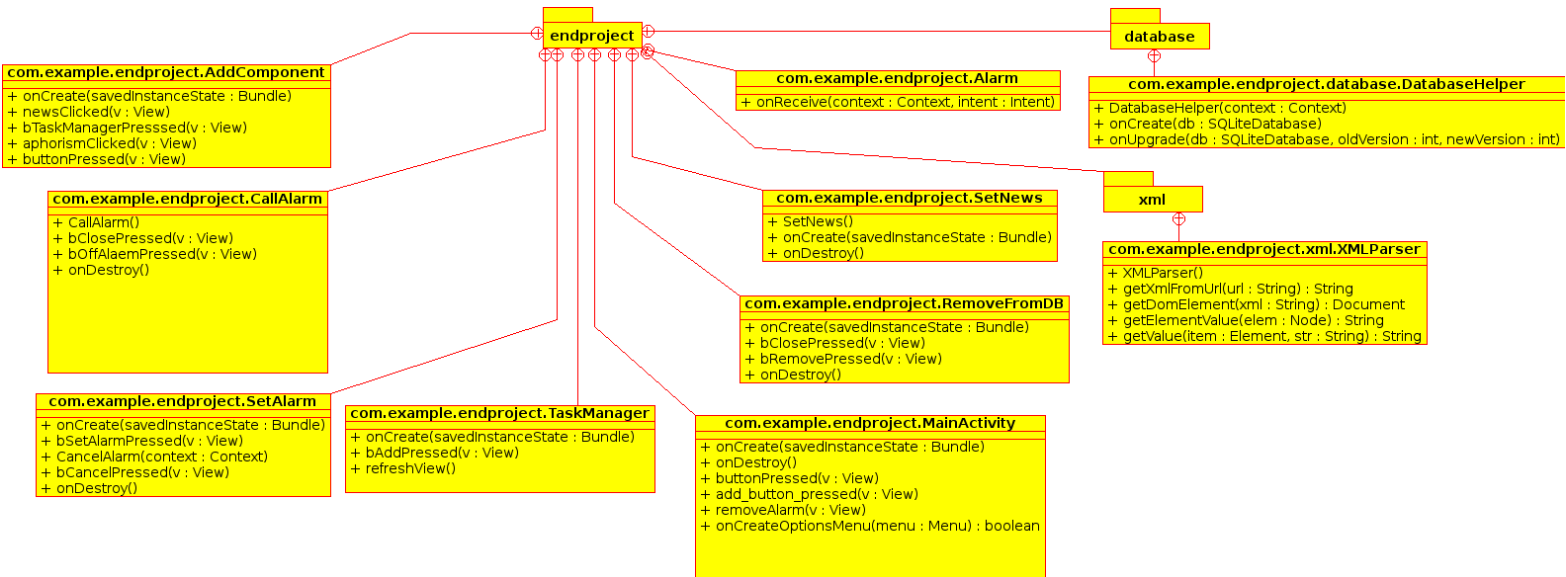


DIAGRAM CLASS ANDROID



EXTRAS

Log history on Git repository.

Commits for Windows Phone:

<http://80.51.13.3/git/?p=studia/semestr7/Windows+Phone+Programming/endProject;a=summary>

Commits for Android:

<http://80.51.13.3/git/?p=studia/semestr7/Mobile+Programming+with+Android/endProject;a=summary>